

MATURE

Continuous Social Learning in Knowledge Networks



Scientific Coordinator
Andreas Schmidt

Department Manager
FZI Research Center for
Information Technologies,
Karlsruhe, GERMANY

FP7 Large-scale Integrating Project
04/2008 - 03/2012

andreas.schmidt@fzi.de
<http://mature-ip.eu>

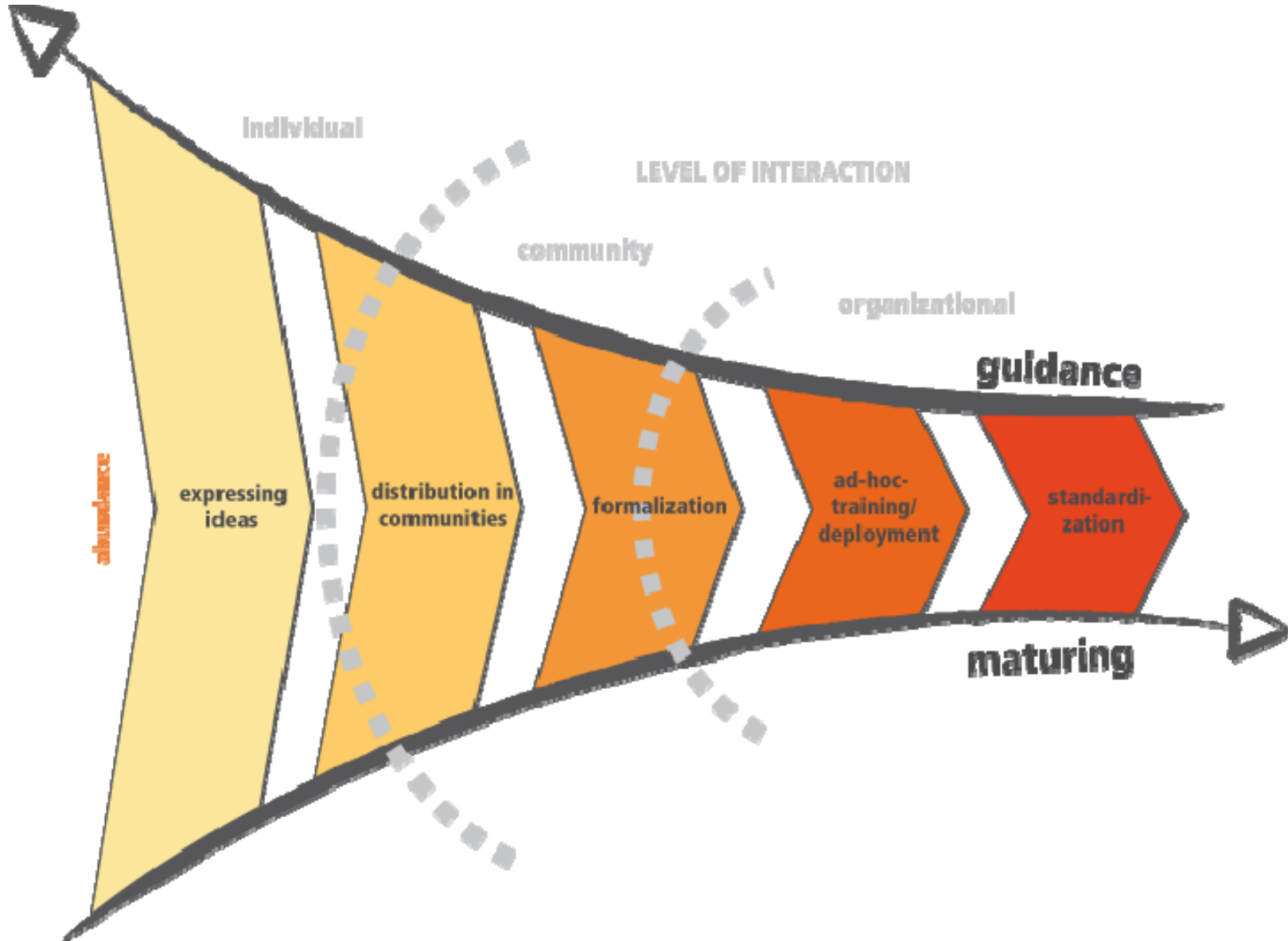
- Agility of enterprises as a key success factor requires
 - *continuous* individual competence development
 - *continuous* learning of the organization and harvesting of the employees' creativity and competency to act

- Today's problems:
 - separation of working and learning
 - lack of passing on learned knowledge of individuals within the organization
 - disruptions between different organizational systems
 - transition of emerging topics into organizational scope is not well supported

- Cumbersome organizational *top-down approaches* to supporting learning have largely failed to deliver
- Web 2.0 *bottom-up approaches* have motivated people to engage in informal learning and knowledge sharing activities
- Why not combine the two:
 - how to leverage intrinsic motivation to contribute to learning efforts
 - how to foster effective contribution of individual learning activities to organizational goals and thus enable sustainable impact

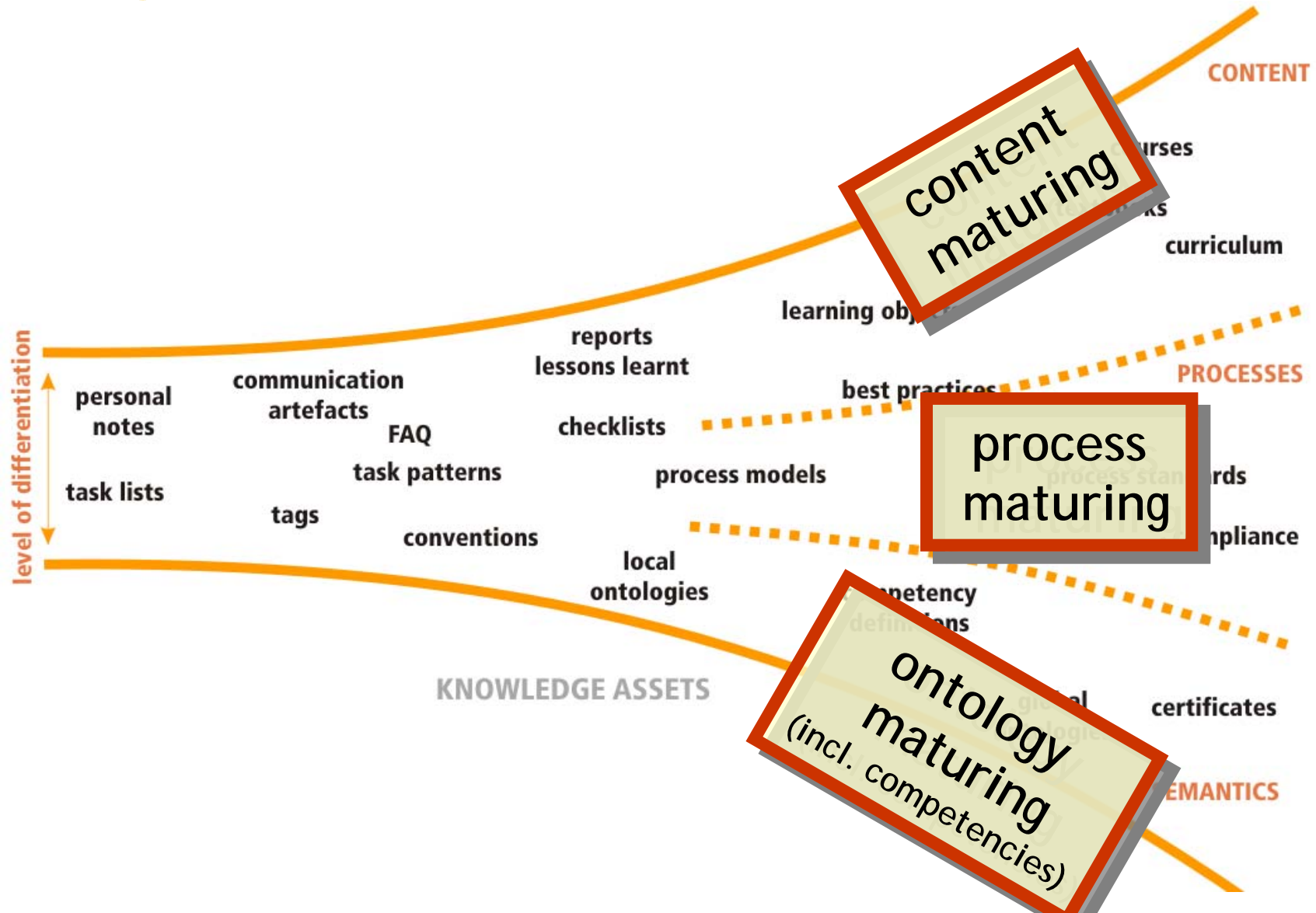


Knowledge Maturing Process Model





Knowledge Maturing Process Model (2)



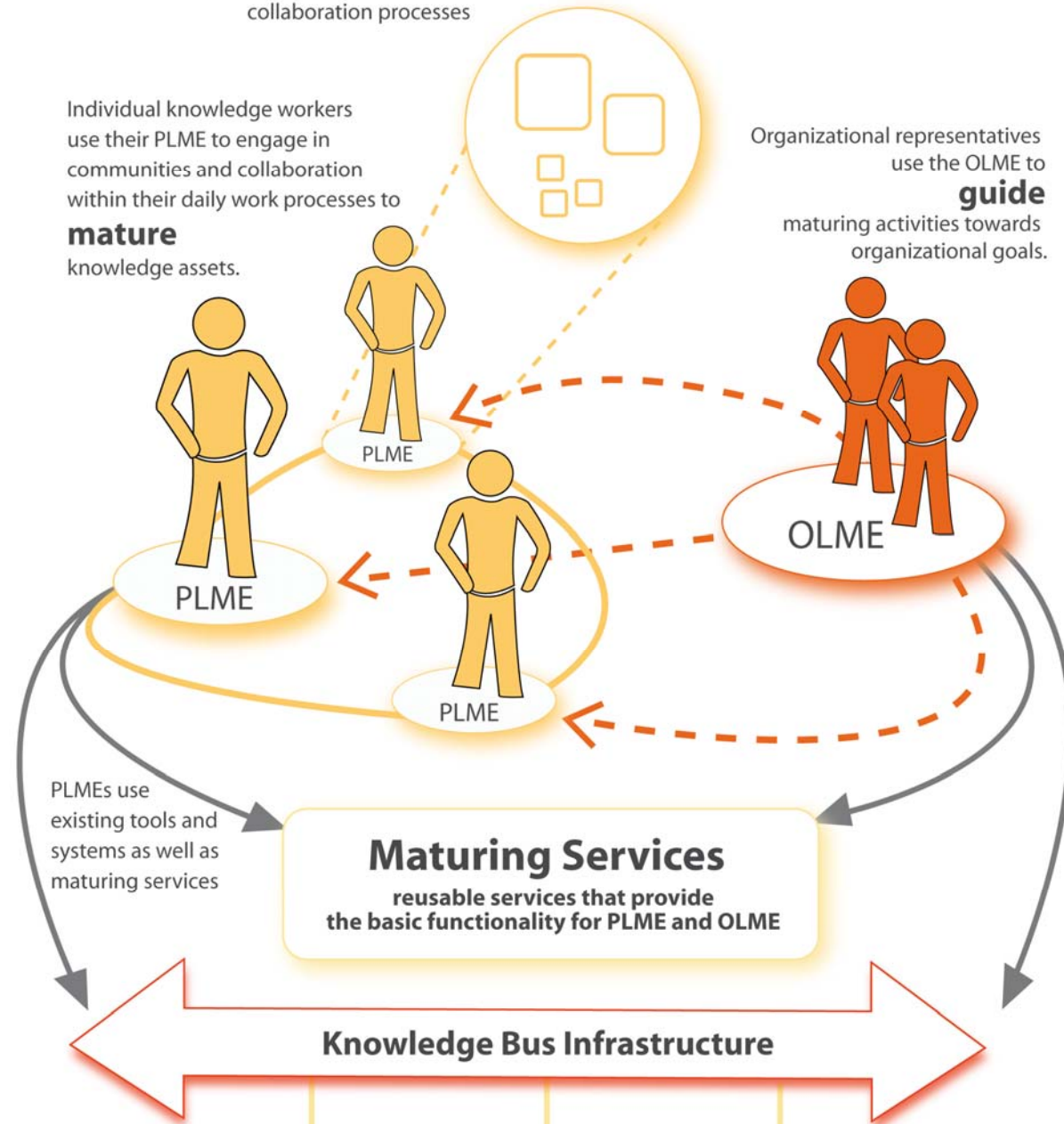
- an **analysis** of real-world maturing practices and development of a sound general **conceptual model**
 - including ways to overcome barriers to it
 - particularly including motivational and social
- a **Personal Learning & Maturing Environment**
- an **Organisational Learning & Maturing Environment**
- reusable **Maturing Services**
 - for seeding and reseeded,
 - and creating awareness of maturing-relevant activities

The MATURE Vision

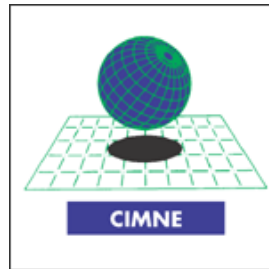
PLME consists of loosely coupled tools blending working, learning and collaboration processes

Individual knowledge workers use their PLME to engage in communities and collaboration within their daily work processes to **mature** knowledge assets.

Organizational representatives use the OLME to **guide** maturing activities towards organizational goals.



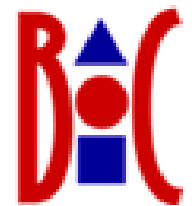
Coordinator



Application Partners



Research & Technology Partners



COMPANIES

Technology Providers

- sitewaerts GmbH, Germany
- Dynamic Media, Austria
- EXODUS S.A., Greece
- IPM United GmbH, Germany
- GISA GmbH, Germany
- magh&boppert, Germany

Consulting

- Kompetenzorientierte Personalentwicklung, Germany

End users

- BMW AG, Germany
- HELIOS Kliniken, Germany
- Erlus AG, Germany

Networks

- EDEN, Hungary
- Ontology Outreach Advisory, Belgium

RESEARCH & TECHNOLOGY TRANSFER

- Know-Center, Austria
- ZSI, Austria
- University of Salford, UK
- University of the Basque Country, Spain
- UHI Millenium Institute, UK
- University of Klagenfurt, Austria

Research Projects

- APOSDLE IP
- NEPOMUK IP
- Im Wissensnetz
- DYONIPPOS
- IMAGINATION

**You are invited
to join!**

MATURE

Continuous Social Learning in Knowledge Networks



Scientific Coordinator
Andreas Schmidt
FZI, Germany

Administrative Coordinator
Pablo Franzolini
CIMNE, Spain

Large-scale Integrating Project
Budget: 9.5 Mio €
04/2008-03/2012

<http://mature-ip.eu>
coordinator@mature-ip.eu